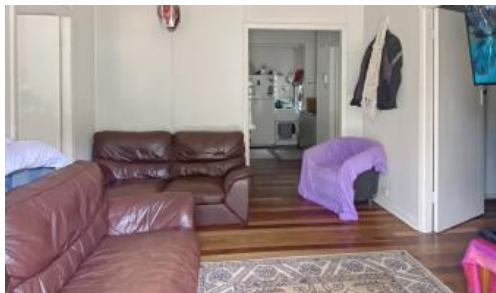
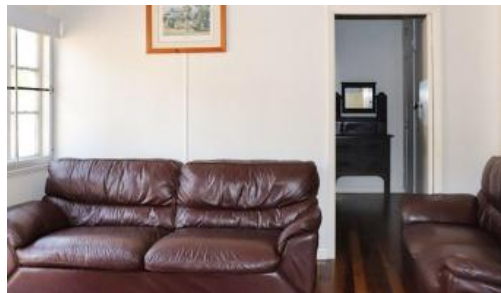




32 Magnetic St, Picnic Bay



## Cute cottage in Picnic Bay

This characterful cottage is a compact three bedroom, 2 bathroom home, just a short walk to sandy Picnic Bay beach. It's also an easy walk over to Nelly Bay or less than 5 minutes' drive to the ferry terminal.

Polished wood floors and casement windows provide character whilst a modern kitchen, bathrooms and split system air cons provide the comforts of modern living.

The front door opens into the lounge area with bedrooms on both sides at the front of the house. Behind the lounge is the kitchen off which a doorway and servery lead to the dining room. The third bedroom is off the kitchen and down a couple of steps are the two bathrooms and laundry.

It's a large 1619m2 block with a seasonal creek flowing through the middle of the block providing a beautiful bush backdrop. There's a small garden shed and plenty of room for parking vehicles etc.

The property is currently tenanted so please contact the agent to arrange an inspection by appointment.

This information has been provided to us by third parties and we do not accept any responsibility for its accuracy. You should make your own enquiries and check the information so as to determine whether or not this information is in fact accurate. You must make your own assessment and obtain professional advice if necessary.

3 bedrooms 2 bathrooms 1,619 m2

**Price** SOLD for \$345,000  
**Property Type** Residential  
**Property ID** 1170  
**Land Area** 1,619 m2

### Agent Details

Alex Strens - 0429 079 429

### Office Details

Sales - Magnetic Island  
 Shop 3 & 4 147-153 Sooning Street,  
 NELLY BAY Magnetic Island QLD  
 4819 Australia  
 0499 772 296



*The above information provided has been furnished to us by the vendor/s. We have not verified whether or not that information is accurate and do not have any belief in one way or the other in its accuracy. We do not accept any responsibility to any person for its accuracy and do no more than pass it on. All interested parties should make and rely upon their own inquiries in order to determine whether or not this information is in fact accurate.*