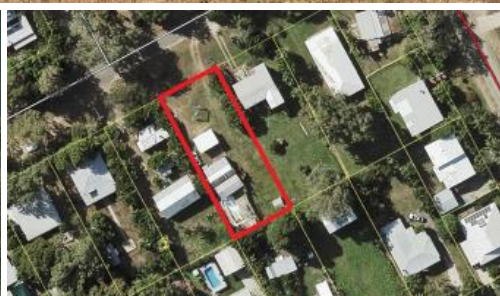


Sold



13 Wansfell St, Picnic Bay



## Renovator's Delight

This cute old cottage is set well back on the 1012m2 block with room for a new dwelling to the front (subject to council approval), still with plenty of room for a shed, garden and more. The pool is already in although it hasn't been used in a while so could do with a little, ok a lot, of work!

A recently added building contains the laundry, store room and bathroom whilst the cottage itself has the bedroom and living room in the centre with an enclosed patio sleepout to the rear and kitchen-diner to the front.

The back yard directly behind the house is taken up by the large inground pool with the other half fully fenced with access should you wish to put in a larger shed then the current garden shed.

Renovate the cottage and pool and you could have a great little holiday home, close to the beach and golf club in Picnic Bay, or build yourself a new home in a great location where land is scarce.

Contact Alex to arrange a private inspection by appointment only.

 1  1  1,012 m2

**Price** SOLD for \$225,000

**Property Type** Residential

**Property ID** 1154

**Land Area** 1,012 m2

### Agent Details

Alex Strens - 0429 079 429

### Office Details

Sales - Magnetic Island  
Shop 3 & 4 147-153 Sooning Street,  
NELLY BAY Magnetic Island QLD  
4819 Australia  
0499 772 296



*The above information provided has been furnished to us by the vendor/s. We have not verified whether or not that information is accurate and do not have any belief in one way or the other in its accuracy. We do not accept any responsibility to any person for its accuracy and do no more than pass it on. All interested parties should make and rely upon their own inquiries in order to determine whether or not this information is in fact accurate.*